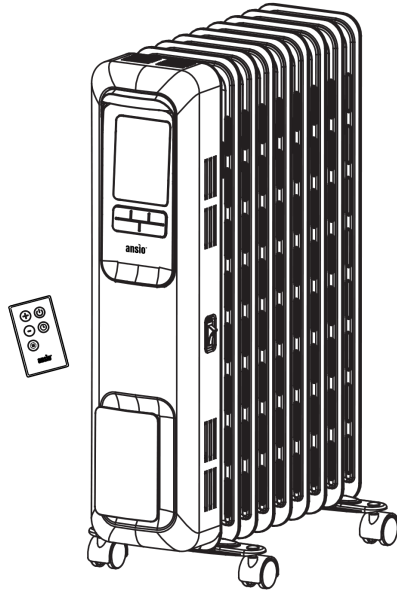


OIL FILLED RADIATOR HEATER


Instruction and Operating Manual



THANK YOU

We thank you for purchasing our product. We understand that this purchase represents your trust in us. We are grateful for this and assure you that we aspire to deliver the best value to you in return. We are proud of our creation and take every precaution to avoid problems. Despite this, sometimes a product might reach you with a defect. If this happens, our responsive customer services team will be able to assist you towards a quick resolution. So, do not hesitate to contact us regarding any aspect of your purchase.

Contact Customer Support at

 **Toll Free: 0800 080 6781**
+44 207 157 9795

This product is only suitable for well insulated spaces or occasional use.

NOTE: Always place the Radiator Heater in a vertical position as shown. Any oil leaks should be reported to the manufacturer immediately.


This Heater is for residential use only.

It is not intended to be used in commercial, industrial or agricultural settings.

READ AND SAVE THESE INSTRUCTIONS

READ CAREFULLY BEFORE ATTEMPTING TO ASSEMBLE, INSTALL, OPERATE OR MAINTAIN THE PRODUCT DESCRIBED. PROTECT YOURSELF AND OTHERS BY OBSERVING ALL SAFETY INFORMATION. FAILURE TO COMPLY WITH INSTRUCTIONS COULD RESULT IN PERSONAL INJURY AND/OR PROPERTY DAMAGE!

IMPORTANT SAFEGUARDS

1. Warning:  In order to avoid overheating, do not cover the heater.
2. If the supply cord is damaged, it must be replaced by the manufacturer or its service agent or a similarly qualified person in order to avoid a hazard.
3. This appliance can be used by children aged from 8 years and above and persons with reduced physical, sensory or mental capabilities or lack of experience and knowledge if they have been given supervision or instruction concerning use of the appliance in a safe way and understand the hazards involved. Children shall not play with the appliance. Cleaning and user maintenance shall not be made by children without supervision.
4. The heater must not be located immediately below a socket-outlet.
5. Do not use this heater in the immediate surroundings of a bath, a shower or a swimming pool.
6. **CAUTION — Some parts of this product can become very hot and cause burns. Particular attention has to be given where children and vulnerable people are present.**

WARNING: IN ORDER TO AVOID OVERHEATING, DO NOT COVER THE HEATER.

**WARNING****ADDITIONAL SAFETY INFORMATION**

- To reduce the risk of fire, electrical shock or personal injury, always follow these important safety instructions and warnings
- **Faulty wall outlet connections may cause the wall outlet to overheat. Be sure that heater plug fits tightly into outlet before each use. During use, check to make certain the heater plug is not overheating. If necessary, have a qualified electrician check and/or replace the wall outlet. In case of overheating or any other malfunctioning of the heater, please contact us for further assistance.**
- Some parts of this product can become very hot and cause burns. Particular attention has to be given where children and vulnerable people are present.
- DO NOT plug heater into any other cord connected device, such as a power strip/extension cord, surge protector, multiple outlet adapter, universal adapter, cord reel or outlet-type air freshener.
- To reduce the risk of fire, electric shock and personal injury, DO NOT attempt to remove, replace, repair or tamper with the originally supplied plug.
- ALWAYS turn OFF and unplug the power cord when servicing, cleaning or moving the heater.
- DO NOT run the power cord under carpeting. Do not cover cord with throw rugs, runners, or similar coverings. Do not route cord under furniture or appliances. Arrange the power cord away from traffic area and where it will not be tripped over.
- DO NOT depend on the on/off switch as the sole means of disconnecting power when servicing or moving the heater. Always unplug the power cord. Always turn off and unplug heater before leaving the area. Never leave children unattended when the heater is on or plugged in.
- DO NOT block or tamper the heater in any manner while it is in operation.
- DO NOT insert fingers or foreign objects to enter any ventilation as it may cause an electric shock, fire and can damage the heater.
- DO NOT use this heater in the immediate surroundings of a bath, a shower, a swimming pool, etc.

- DO NOT place the heater on soft surfaces like a bed as the openings may become blocked. Always place the heater in a flat, even surface.
- DO NOT use the heater outdoors.
- Keep combustible materials, such as bedding, pillows, furniture, papers, clothes and curtains at least 5 feet (1.5 m) away from the heater.
- DO NOT use this heater in areas where flammable liquids or vapours are used, stored or are present, including paints, gasoline, varnishes, floor refinishing products or solvents.
- Make certain that the room is equipped with a working smoke detector.

TECHNICAL SPECIFICATIONS

MAX POWER: 2300W

VOLTAGE: 220-240V / 50 Hz

GUARANTEE

This product comes with standard 1 Year Warranty against all manufacturing defects. In addition, register your purchase at www.ansio.co.uk within 15 days, and you can get an additional one year FREE Extended Warranty. Terms and conditions apply. Visit our website for more info.

This guarantee is invalid if the product is found to have been abused or tampered with in any way, or not used for the purpose for which it was intended.

Faulty goods should be returned to their place of purchase, no product can be returned to us without prior permission.

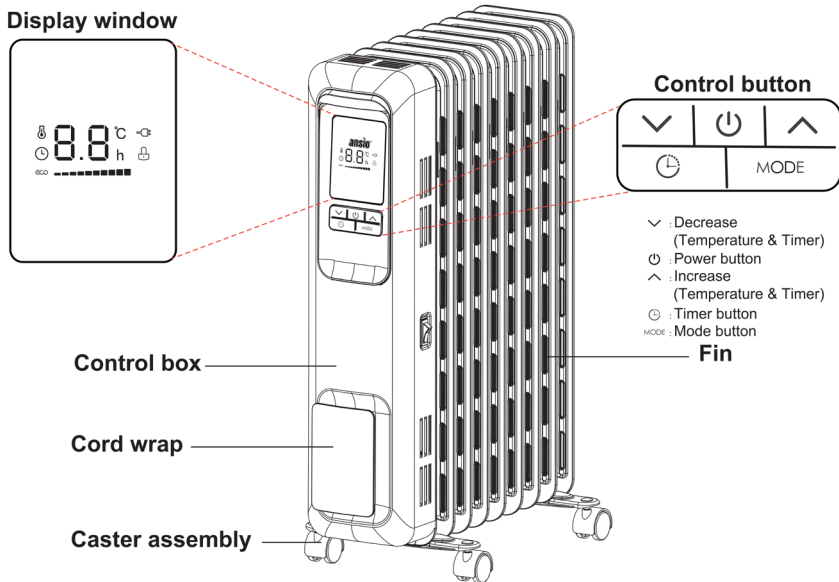
This guarantee does not affect your statutory rights.

NOTE

- There may be traces of smoke or odour arising from the heating coil when the heater is first operated. This is expected and will quickly fade away and will not re-occur. If the smoke or bad odour persists, do not use the heater and contact us for assistance.

- The room temperature when regulated by the heater may vary by a few degrees compared to a store-bought room temperature sensor. The difference can arise from various factors including the location of the heater and the room temperature sensor and the quality of the store-bought room temperature sensor.

COMPONENTS OF THE HEATER



TOOLS NEEDED FOR ASSEMBLY

No tools are needed – the product comes with Butterfly nuts that can be fixed by hand.

BEFORE USING THE HEATER

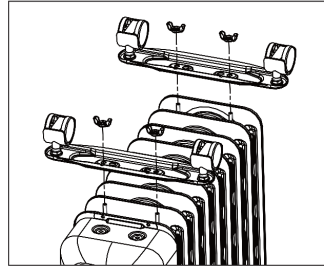
1. Check if the power cord is in good condition.
2. Ensure that the heater is connected to an appropriate power socket in accordance with the local regulations.
3. Always place the heater on a flat surface. The tip over switch at the base of the heater will turn the heater off if the heater is placed on an uneven surface or if the heater is accidentally knocked off.

INSTALLATION OF THE CASTER ASSEMBLY

1. Place the heater upside down as shown in the figure. To avoid scratching the surface of the heater, it is advisable to place a soft cloth underneath the inverted heater.

Note: While inverting, it is possible that you hear the oil flowing within the appliance. This is normal and expected.

2. Connect and tighten the two-wheel carrier plates to the body of the heater with butterfly nuts supplied, as shown in the figure.
3. Place the heater upright after secure installation of the wheel carrier plates, with the wheels touching the ground.



OPERATING INSTRUCTIONS

NOTE: When the heater is working, it is normal to hear clicking noises in the appliance. Do not be concerned or alarmed due to this.

STAND-BY MODE

The heater is in Stand-by mode while the black switch at the side of the heater is 'ON' and the power button is 'Off'.

SAFETY PROTECTION FEATURE


If the room temperature exceeds 50 °C, all the buttons on the control panel of the heater will be disabled. The heater beeps 10 times and displays "FF" even if it is on the standby mode. The heater then switches OFF as a safety feature.

TEMPERATURE CHECK


Whenever the heater is set to a temperature lower than that of the room temperature, the heater will turn ON for a few minutes and then the thermostat sensor will turn the heater off. However, once the room temperature falls below the set temperature, the heater turns back ON automatically.

STARTING THE HEATER

Connect the heater to the power supply. You will hear a beep sound. Turn on the power switch at the side of the heater. Now, press the Power button

 on the heater or on the remote.

FUNCTION SWITCHING

Pressing the MODE button on the heater or  on the remote repeatedly cycles through the modes as below:

The High Power Mode, Medium Power Mode and Low Power Mode can be distinguished by the length of the power level indicator bar on the Display panel while the Eco mode is displayed as “eco” in green.

High Power Mode:

The heater operates at 2300W.

Medium Power Mode:

The heater operates at 1300W

Low Power Mode:



The heater operates at 1000W.

Eco Mode:

The Eco mode is intended for saving power. When you select the ECO mode using the Mode button either on the heater or using the remote, the heater will automatically set the power level for maximum energy efficiency by comparing the set temperature and the room temperature.





NOTE: If the room temperature is above the set temperature, the heater will switch ON for a few minutes and then automatically switch OFF.

TEMPERATURE SETTING

When the heater is ON, press the  and  buttons on the heater or + and - buttons on the remote to set the desired temperature level. The available temperature range is between 5°C and 35°C. When the room reaches the set temperature level, the heater will go to the standby mode. Once the room temperature drops below the set temperature, the heater will turn ON automatically.

TIMER SETTING

Stop Timer

When the heater is turned ON, press the Timer button  on the control panel or on the remote to set the desired number of hours by when you want the heater to stop. You can set a value between 1-24 hours by pressing the  and  buttons to increase and decrease the timer by 1 hour respectively. To cancel the Timer, press the power button  twice. The timer can only be operated in increments or decrements of hours.

Start Timer

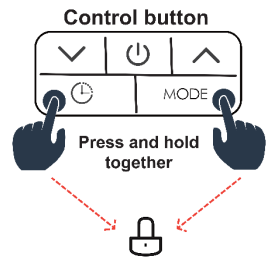
When the heater is in the Stand-by mode, press the Timer button 🕒 on the control panel or on the remote to set the desired number of hours after which you want the heater to be started. You can set a value between 1-24 hours by pressing the ⬆️ and ⬆️ button to increase and decrease the timer by 1 hour respectively. To cancel the Timer, press the power button 🔌 twice. The timer can only be operated in increments or decrements of hours.

NOTE:

- You can check the timer duration anytime by pressing the Timer button 🕒. The timer will only display the time in hours and not minutes.
- The memory function will not retain the last used timer settings.

CHILD LOCK SETTING

To turn the child lock setting ON, Press the MODE button and the Timer button 🕒 together for a few seconds. The child lock setting will turn ON and a lock symbol 🔒 will be displayed.



NOTE:

- When the heater is turned OFF or after a power failure, the child lock setting will be turned OFF.
- Child Lock cannot be activated using the Remote.

MEMORY FUNCTION

When the heater is turned OFF and turned back ON again, the heater will retain the last used settings.

NOTE:

- When you turn the heater ON for the first time, the heater will start with a high-power mode at 35°C automatically.
- The Memory function does not retain the last used Timer setting if the heater is turned OFF and turned back ON.

TURNING THE HEATER OFF

To turn the heater OFF, press the power button 🔌 to switch OFF. Turn the black switch found at the side of the heater OFF and pull out the plug from the mains.

BEFORE MOVING THE HEATER

Before moving the heater, follow the instructions on “Turning the heater OFF” as above and then move the heater to a desired place.

USING THE REMOTE CONTROL

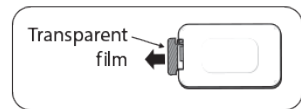
The remote-control buttons operate the same way as the buttons on the control panel.



	ON/OFF button
	Mode button
	Temperature increase
	Temperature decrease
	Timer button

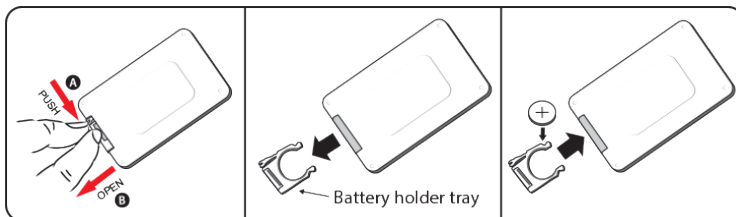
FIRST TIME USE:

To activate the battery, remove the transparent film by pulling it out. The remote control will then be activated and ready for use.



REPLACING THE REMOTE WITH NEW BATTERY:

1. To pull out the battery holder tray, push the locking latch in the direction of arrow (A), while pulling the notch in the direction of arrow (B) simultaneously.
2. Insert 1 x CR2032 Lithium battery in the battery holder tray, making sure that the positive side is facing upwards.
3. Push the battery holder tray back in.



NOTE: Remote-control buttons cannot be used for operations which require two buttons to be used simultaneously. In these cases, use the buttons on the control panel.

SAFETY PROTECTION FEATURES

- 1. Overheat protection feature:** When the temperature of the heater is too high, the thermostat will automatically turn the heater OFF. When the heater cools down completely, it can be used normally. Improper usage of the heater, dusty environment etc. can cause this. The heater needs to be cooled down completely and can be re-used as normal.
- 2. Accidental Tip-Over protection feature:** When the heater is accidentally tipped over, the safety tip-over switch at the base of the heater will automatically cut the power off. When the heater is placed in an upright position on an even surface, it can then be used normally.

CLEANING AND MAINTENANCE

Before attempting to clean this heater, always ensure that the power plug is removed, and the heater is cooled down completely.

1. Accumulated dust must be removed from the heater with a soft cloth. Wipe the exterior surface of the heater with a cloth moistened (not dripping wet) with a solution of mild detergent and water. Dry the heater thoroughly with a soft dry cloth before operating it.
2. Store heater in a clean and dry place when not in use.
3. Do not scarp the surface of the heater with sharp tools. This is to avoid
4. the surface getting rusty by damaging the paint coating.

NOTE: Portable electric heaters are designed to be a supplementary heating source. They are not intended to be the main source of heating.

TROUBLESHOOTING

Problem	Possible Cause	Solution
When the power is turned ON, the power indicator light does not illuminate, and the heater does not work.	The plug may not be inserted well.	Check whether the plug is properly inserted into the wall socket. Alternatively, ensure that the power receptacle is fully functional or try another plug point.

	The black switch to the side of the heater is not turned ON.	Check if the black switch to the side of the heater is ON.
The heater suddenly stops working.	The room temperature could have exceeded the set temperature; hence the heater is turned OFF automatically.	Cool the heater down completely before reuse. Or Raise the set temperature above the room temperature.
None of the Control Buttons work.	Child Lock is ON	Press the Mode button and the Timer button together for a few seconds to turn OFF the child lock.
FF flashing on the display panel	The room temperature is likely to be more than 50 degrees.	Cool the heater down completely before re-use.

WASTE DISPOSAL

You can help protect the environment! Please remember to respect local recycling laws. Dispose of faulty or unwanted electrical appliances in accordance with local policies and service centres.



- This item must not be disposed of with household waste.
- Please recycle where facilities exist. In the interests of health, safety and the environment, please check with your Local Authority for recycling advice
- By ensuring that you dispose of your old electrical and electronic equipment according to The European Directive 2012/19/EU on Waste Electrical and Electronic Equipment (WEEE), you are helping to preserve our natural resources.

For your nearest disposal facility, visit www.recycle-more.co.uk

Environmental Agency Registration Number for ANSIO: WEE/MM6674AA

Information requirements for electric local space heaters

Model identifier(s): ANSIO 1321					
Item	Symbol	Value	Unit	Item	Unit
Heat output				Type of heat input, for electric storage local space heaters only (select one)	
Nominal heat output	P _{nom}	1.3	kW	manual heat charge control, with integrated thermostat	[no]
Minimum heat output (indicative)	P _{min}	1.0	kW	manual heat charge control with room and/or outdoor temperature feedback	[no]
Maximum continuous heat output	P _{max,c}	1.3	kW	electronic heat charge control with room and/or outdoor temperature feedback	[no]
Auxiliary electricity consumption				fan assisted heat output	[no]
At nominal heat output	el _{max}	1.296	kW	Type of heat output/room temperature control (select one)	
At minimum heat output	el _{min}	0.980	kW	single stage heat output and no room temperature control	[no]
In standby mode	el _{SB}	0.000	kW	Two or more manual stages, no room temperature control	[no]
				with mechanic thermostat room temperature control	[yes]
				with electronic room temperature control	[no]
				electronic room temperature control plus day timer	[no]
				electronic room temperature control plus week timer	[no]
				Other control options (multiple selections possible)	
				room temperature control, with presence detection	[no]
				room temperature control, with open window detection	[no]
				with distance control option	[no]
				with adaptive start control	[no]
				with working time limitation	[no]
				with black bulb sensor	[no]
Contact details	Ansio Ltd., PO Box 106, Banstead, SM7 9BU. UK.				
*Electricity consumption in standby mode is 0.381W.					

The seasonal space heating energy efficiency of all local space heaters except commercial local space heaters, $\eta_s(\%)$	37.0
---	------

Ansio Ltd., PO Box 106, Banstead, SM7 9BU, UK

✉ support@ansio.co.uk

🌐 www.ansio.co.uk

KEEP THIS INSTRUCTION MANUAL SAFELY, DO NOT THROW IT AWAY