

30” Tower Fan

User Installation and Operations Manual

Model: ANSIO 1051 | ANSIO 1052 | ANSIO 1034

THANK YOU

We thank you for purchasing our product. We understand that this purchase represents your trust in us. We are grateful for this and assure you that we aspire to deliver the best value to you in return. We are proud of our creation and take every precaution to avoid problems. Despite this, sometimes a product might reach you with a defective appliance. If this happens, our responsive customer services team will be able to assist you towards a quick resolution. So, do not hesitate to contact us regarding any aspect of your purchase.

You can contact us by:

- Sending an email to support@ansio.co.uk
- Calling us on **0800 080 6781 (Toll Free)** or **+44 207 157 9795**

GUARANTEE

This product comes with a standard 1 Year warranty against all manufacturing defects.

In addition, register your purchase at www.ansio.co.uk within 15 days, and you can get an additional one-year FREE Extended Warranty.

Terms and conditions apply. Visit our website for more info.

This guarantee is invalid if the product is found to have been abused or tampered with in any way, or not used for the purpose for which it was intended.

You can always contact us when you need any assistance in returning the goods or any warranty related questions. This guarantee does not affect your statutory rights.

CAUTION

Read Rules for Safe Operation, Installation Instructions and Operation carefully.

WARNING

1. If the supply cord is damaged, it must be replaced by manufacturer or its service agent or a similarly qualified person in order to avoid a hazard.
2. To protect against the risk of electrical shock, do not immerse the unit, cord or plug in water or other liquid.

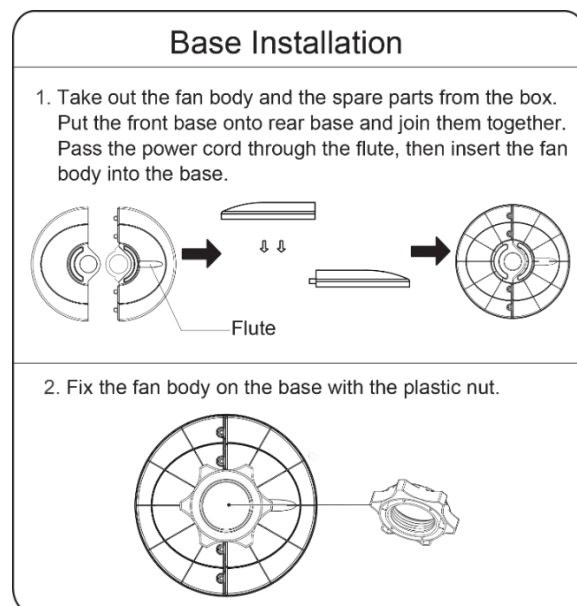
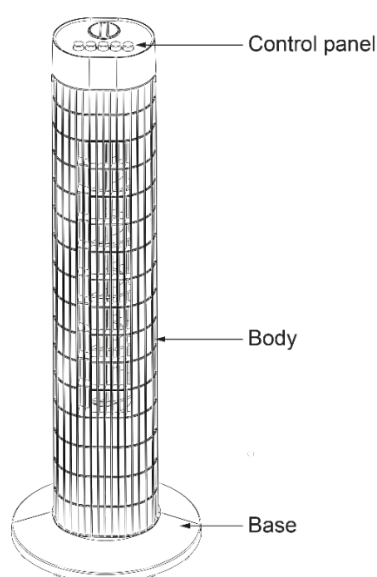
Customer Support - UK Toll Free **0800 080 6781** or **+44 207 157 9795**

3. This appliance can be used by children aged from 8 years and above and persons with reduced physical, sensory or mental capabilities or lack of experience and knowledge if they have been given supervision or instruction concerning use of the appliance in a safe way and understand the hazards involved. Children shall not play with the appliance. Cleaning and user maintenance shall not be made by children without supervision.
4. When the appliance is not in use and before cleaning, unplug the appliance from the outlet.
5. Keep electrical appliances out of reach from Children or infirm persons. Do not let them use the appliances without supervision.
6. When the fan is assembled, the rotor blade guard shall not be taken off anymore.
 - Prior cleaning, unplug the fan.
 - The rotor guard shall not be dissembled/opened to clean the rotor blades.
 - Wipe the fan enclosure and rotor blade guard with a slightly damp cloth.

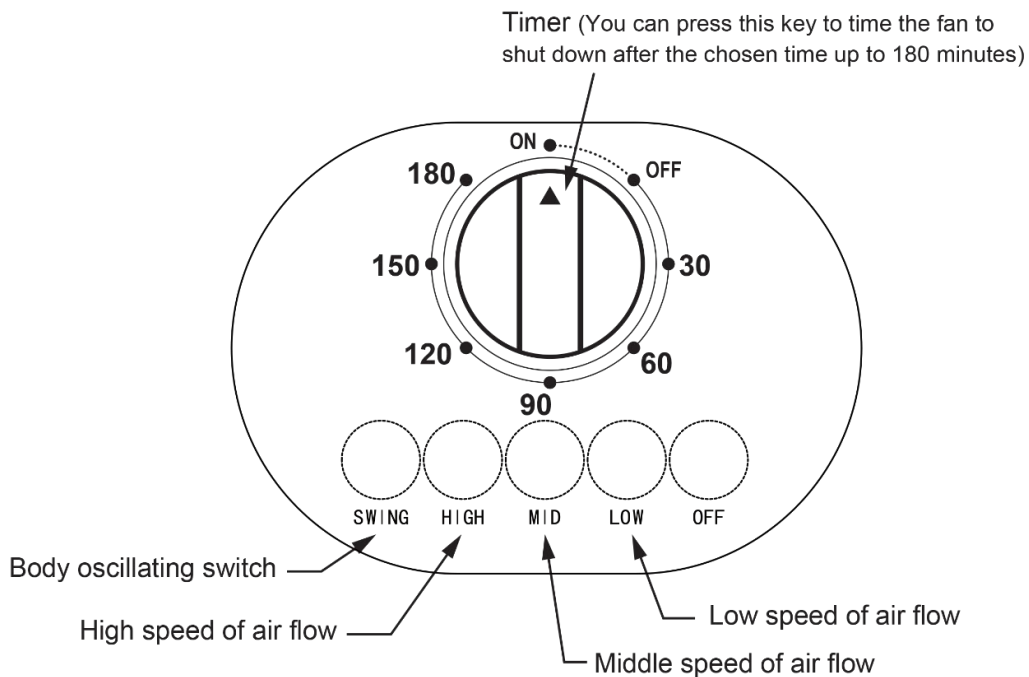
RULES FOR SAFE OPERATION

1. Never insert fingers, pencils, or any other object through the grille when fan is running.
2. Disconnect fan when moving from one location to another.
3. Be sure fan is on a stable surface when operating to avoid overturning.
4. DO NOT place the fan in a windowsill, rain may create electrical hazard.
5. This product is for household use only.

INSTALLATION INSTRUCTIONS:



Customer Support - UK Toll Free **0800 080 6781** or **+44 207 157 9795**



Warning: Do not rotate the timer knob clockwise from "180 min" to "ON" position.

OPERATION

Switching On

- Set the appliance on a dry, level and sturdy surface
- Plug the appliance to the mains

On/Off, Speed Selection

- To turn the fan ON, press LOW or MID or HIGH button.
Note: For the fan to function, the timer setting should not be in "OFF" position.
- To turn the fan OFF press the "OFF" button.

Oscillation

- To have the fan oscillate, press the SWING button once. The fan will start oscillating within a rotating angle of 60°.
- To stop the oscillation, press SWING button again. The fan will stop oscillating.

Timer function

- Rotate the timer knob to the desired time. Once the timer counts down to zero, the fan will automatically turn off.

CARE AND MAINTENANCE

The fan requires little maintenance. Do not try to fix it by yourself. Refer it to qualified service personnel if service is needed.

1. Before cleaning and assembling, fan must be unplugged.
2. To ensure adequate air circulation to the motor, keep vents at the rear of the motor free of dust. Do not disassemble the fan to remove dust.
3. Wipe the exterior parts with a soft cloth soaked in a mild detergent.
4. Do not use any abrasive detergent or solvents to avoid scratching the surface.
5. Do not use any of the following as a cleaner: gasoline, thinner, bending.
6. Do not allow water or any other liquid into the motor housing or interior parts.
7. When not in use, store the fan (preferably in its original box) in a cool, clean and dry location.

CLEANING

1. Be sure to unplug from the electrical supply source before cleaning.
2. Plastic parts should be cleaned with a soft cloth moistened with mild soap. Thoroughly remove soap film with dry cloth.

WASTE DISPOSAL

- This item must not be disposed of with the household waste.
- Please recycle where facilities exist. Check with your Local Authority for recycling advice. The crossed-out wheeling bin symbol is to emphasize that when the item is disposed, it must be separately collected for recycling the materials they contain in the interest of environment and human health.
- By ensuring that you dispose of your old electrical and electronic equipment according to The European Directive 2012/19/EU on Waste Electrical and Electronic Equipment (WEEE), you are helping to preserve our natural resources.



For your nearest disposal facility, visit www.recycle-more.co.uk

Environmental Agency Registration Number for ANSIO: WEE/MM6674AA

KEEP THIS INSTRUCTION MANUAL SAFELY, DO NOT THROW IT AWAY

**Ansio Ltd.,
PO Box 106, Banstead, SM7 9BU, UK.
support@ansio.co.uk | www.ansio.co.uk**

Customer Support - UK Toll Free 0800 080 6781 or +44 207 157 9795